

# SDT1608 SERIES ~ Shielded SMD Power Inductors



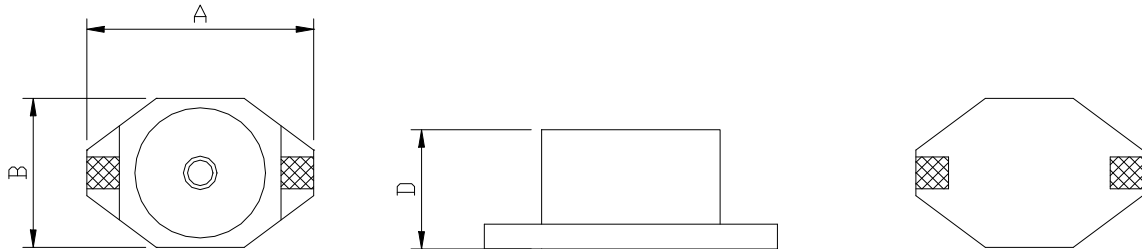
RoHS Compliant

## PART NUMBERING SYSTEM

<b>SDT</b>	<b>1608</b>	—	<b>101M</b>	—	<b>LF</b>
TYPE	DIMENSIONS		INDUCTANCE		LEAD FREE

## SHAPES AND DIMENSIONS

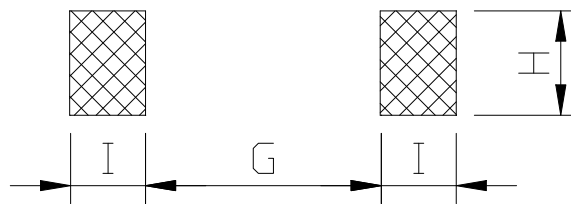
UNIT : mm



**A=6.60 max. B=4.45 max. D=2.92 max.**

## RECOMMENDED PATTERNS

UNIT : mm



**G= 4.06 H= 3.56 I = 1.40**

## FEATURES

- Small high current inductor - **only 0.26" x 0.175" x 0.115" high**
- **True surface mount design**, magnetically shielded, fully pick and place compatible
- Specially designed to have a **"swinging" inductance vs current** characteristic
- **RoHS-compliant**. 260°C compatible

## SDT1608 SERIES ~ Shielded SMD Power Inductors



RoHS Compliant

### SPECIFICATION TABLE

PART NUMBER	INDUCTANCE ( $\mu$ H)	INDUCTANCE Rating ( $\mu$ H)	DCR ( $\Omega$ ) (Max.)	IDC ( A )	Switching Freq. Max. ( f )
SDT1608-1R0M-LF	1.0 $\pm$ 20%	0.6	0.045	2.0	1MHHz
SDT1608-1R5M-LF	1.5 $\pm$ 20%	0.8	0.050	1.9	1MHHz
SDT1608-2R2M-LF	2.2 $\pm$ 20%	0.9	0.065	1.5	1MHHz
SDT1608-3R3M-LF	3.3 $\pm$ 20%	1.5	0.070	1.2	1MHHz
SDT1608-4R7M-LF	4.7 $\pm$ 20%	2.0	0.080	1.2	1MHHz
SDT1608-6R8M-LF	6.8 $\pm$ 20%	3.0	0.085	1.0	1MHHz
SDT1608-100M-LF	10 $\pm$ 20%	5.0	0.095	0.7	1MHHz
SDT1608-150M-LF	15 $\pm$ 20%	6.0	0.135	0.6	1MHHz
SDT1608-220M-LF	22 $\pm$ 20%	10	0.160	0.5	1MHHz
SDT1608-330M-LF	33 $\pm$ 20%	12	0.275	0.45	1MHHz
SDT1608-470M-LF	47 $\pm$ 20%	20	0.300	0.34	1MHHz
SDT1608-680M-LF	68 $\pm$ 20%	30	0.575	0.29	1MHHz
SDT1608-101M-LF	100 $\pm$ 20%	40	1.100	0.24	1MHHz
SDT1608-151M-LF	150 $\pm$ 20%	60	1.400	0.20	500KHz
SDT1608-221M-LF	220 $\pm$ 20%	90	2.250	0.17	500KHz
SDT1608-331M-LF	330 $\pm$ 20%	100	2.900	0.16	500KHz
SDT1608-471M-LF	470 $\pm$ 20%	150	3.600	0.14	500KHz
SDT1608-681M-LF	680 $\pm$ 20%	200	4.550	0.12	500KHz
SDT1608-102M-LF	1000 $\pm$ 20%	400	8.100	0.08	500KHz

- Inductance tested at 100 kHz, 0.1 Vrms.
- Average maximum allowable current. SDT1608 are designed for current spikes as high as twice the current rating.
- Operating temperature range -40°C to +125°C, Electrical specifications at 25°C.
- Packing : 13" reel, machine-ready ,embossed plastic tape ( 2,000 parts per full reel).