

# SET580X SERIES –

## High Current SMD Power Inductors

***New Products***



RoHS Compliant

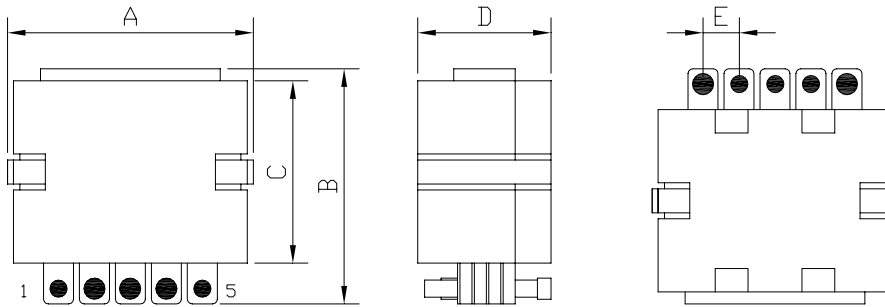
<b>SET</b>	<b>5804</b>	—	<b>2R4L</b>	<b>LF</b>
TYPE	DIMENSIONS		INDUCTANCE	LEAD FREE

### FEATURES

- Designed for high current , high volt\*time applications .
- Lowest DCR with high efficiency
- Shielded construction
- Lead Free with RoHS compliant .

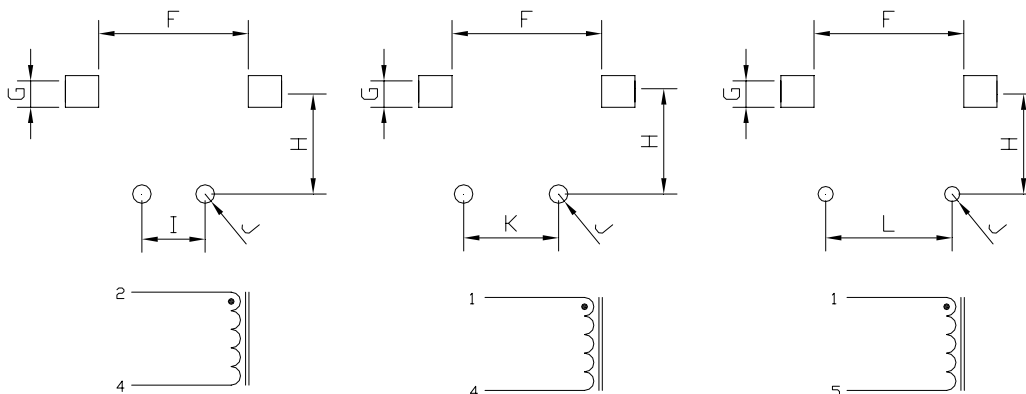
### SHAPES AND DIMENSIONS

UNIT : mm



**A=20.5 Max. B=19.6 Max. C=15.2 Max. D=7.37 Max. E=3.18±0.15**

### RECOMMENDED PATTERNS



**F=14.35 Ref. G=3.18 Ref. H=9.91 Ref. I=6.35 Ref. J=2.79 Ref. K=9.53 Ref. L=12.7 Ref.**

## SET580X SERIES –

## High Current SMD Power Inductors



RoHS Compliant

### SPECIFICATION TABLE

PART NUMBER	INDUCTANCE ( $\mu$ H) @ 0A	Isat(A) $\Delta L/L0A=15\%$ (Typ.)	Isat(A) (Max.)	DCR (m $\Omega$ ) (Max.)	Turns ( Ts )
<b>2 TURNS ( Low Loss ) SERIES</b>					
SET5801-R45L-LF	0.45 $\pm$ 15%	0.45	73	0.48	2 Turns Low Loss
SET5801-R65L-LF	0.65 $\pm$ 15%	0.63	54	0.48	2 Turns Low Loss
SET5801-R91L-LF	0.91 $\pm$ 15%	0.85	39	0.48	2 Turns Low Loss
SET5801-1R1L-LF	1.10 $\pm$ 15%	1.05	30	0.48	2 Turns Low Loss
SET5801-1R3L-LF	1.30 $\pm$ 15%	1.25	25	0.48	2 Turns Low Loss
SET5801-1R5L-LF	1.50 $\pm$ 15%	1.45	21	0.48	2 Turns Low Loss
<b>2 TURNS SERIES</b>					
SET5802-R45L-LF	0.45 $\pm$ 15%	0.45	52	0.98	2 Turns
SET5802-R65L-LF	0.65 $\pm$ 15%	0.63	52	0.98	2 Turns
SET5802-R91L-LF	0.91 $\pm$ 15%	0.85	39	0.98	2 Turns
SET5802-1R1L-LF	1.10 $\pm$ 15%	1.05	30	0.98	2 Turns
SET5802-1R3L-LF	1.30 $\pm$ 15%	1.25	25	0.98	2 Turns
SET5802-1R5L-LF	1.50 $\pm$ 15%	1.45	21	0.98	2 Turns
<b>3 TURNS SERIES</b>					
SET5803-1R0L-LF	1.00 $\pm$ 15%	0.95	42	1.43	3 Turns
SET5803-1R5L-LF	1.50 $\pm$ 15%	1.40	36	1.43	3 Turns
SET5803-2R0L-LF	2.00 $\pm$ 15%	1.90	25	1.43	3 Turns
SET5803-2R5L-LF	2.50 $\pm$ 15%	2.40	20	1.43	3 Turns
SET5803-3R0L-LF	3.00 $\pm$ 15%	2.80	15	1.43	3 Turns
SET5803-3R5L-LF	3.50 $\pm$ 15%	3.40	12	1.43	3 Turns
<b>4TURNS SERIES</b>					
SET5804-1R6L-LF	1.60 $\pm$ 15%	1.60	37	1.80	4 Turns
SET5804-2R4L-LF	2.42 $\pm$ 15%	2.40	30	1.80	4 Turns
SET5804-3R6L-LF	3.60 $\pm$ 15%	3.30	17	1.80	4 Turns
SET5804-4R4L-LF	4.40 $\pm$ 15%	4.00	14	1.80	4 Turns
SET5804-5R3L-LF	5.34 $\pm$ 15%	4.90	11	1.80	4 Turns
SET5804-6R2L-LF	6.20 $\pm$ 15%	5.80	9	1.80	4 Turns

- Inductance tested at 100KHz/0.1Vrms .
- I sat : DC current at which the inductance drops 15% (typ) from its value without current.
- I rms : Average current for a 45°C temperature rise above 25°C ambient.
- Operating temperature range -40°C to +130°C , Electrical specifications at 25°C.